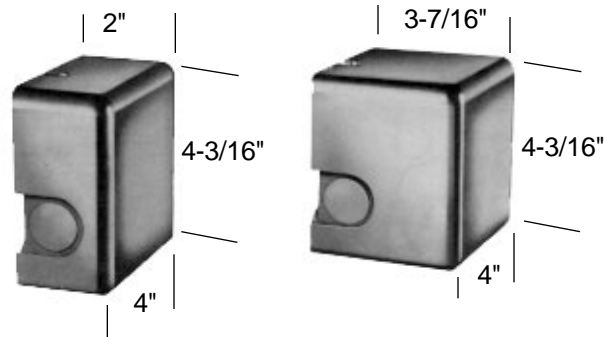


EA Series Actuators

- **Options Available as Kits**
(Fields 7 and 8 of Actuator Model No.)



For Millimeters multiply inches by 25.4 (Inches x 25.4 = Millimeters).

Options

All kits mount in place of the back plate on the actuator. The following options are available for the high torque, medium torque and low torque actuators.

Actuator Option	Kit for 90° Unit	Kit for 180° Unit
01	A-9279	
04	A-9282	A-9281
06	71-586	71-588

Actuator Option	Kit for 90° Unit	Kit for 180° Unit
02	A-9280	
05	A-9284	A-9283
07	n/a	71-589

Auxiliary Switch :

A built-in, cam operated, snap acting, SPDT switch is normally included. The point of switch actuation is readily adjustable, but is factory set to close one contact and open the other at the end of the clockwise stroke. The auxiliary switch housing is not weather resistant.

Rating:	<u>120 Vac</u>	<u>240 Vac</u>
Running Current	5.8 Amps	2.9 Amps
Locked Rotor	34.8 Amps	17.4 Amps
Non-Inductive	12 Amps	6 Amps
Maximum total load not to exceed 2000 VA.		

Rear Shaft Kit (For operating a small damper):

Kit No. A-9285 (option 03)
Plate: 4" W x 4-3/16" H
Shaft: 1/2" diameter x 15/16" long



NEMA 4 weather Resistant Cover Kit:

Kit No. AM-368 (option 37) for EA70 Series;
Kit No. A-9301 for EA20, EA40 and EA50 Series.



Rear Slidewire (Retransmitting Slidewire):

5 W variable resistor for driving other actuators in parallel. Slidewire housing is weather resistant. Plate size for all kits is 4-1/8" W x 6-7/8" H. Box depth as shown in photo caption.

When ordering rear slidewire kit (actuator model no. option 31, 32, 33, 41, 42 or 43), write complete part number as shown.

EA Series Actuators

Ordering Information

MODEL A - 1 0 9 4 6 - - -
 Field No. 4 5 6 7 8 9 10 11 12 13 14 15

Fields 4 through 9. Basic Part No.

Fields 10, 11, 12. Actuator Torque

- 100 - Low and medium
- 200 - High

Field 13. Number of Slidewires

- 1 - One slidewire (actuator option 31 or 41)
- 2 - Two slidewires (actuator option 32 or 42)
- 3 - Three slidewires (actuator option 33 or 43)

Fields 14, 15. Slidewire Value

- 01 - 100 Ω, 90°
- 02 - 100 Ω, 180°
- 03 - 135 Ω, 90°
- 07 - 1 kΩ, 90°
- 08 - 1 kΩ, 180°



One Slidewire.
1-7/8" Deep.



Two Slidewires.
2-7/8" Deep.



Three Slidewires.
3-7/8" Deep.

Accessories

Medium Torque, Low Torque, and Spring Return Actuators



Crank Arm (for motor shaft)
A-3767 with round hole
A-13120 with splined hole
17/64" slot. Radius adjustable
from 7/8" to 3-1/8"



Connecting Link (rod only)
A-3768
20" x 5/16" diameter

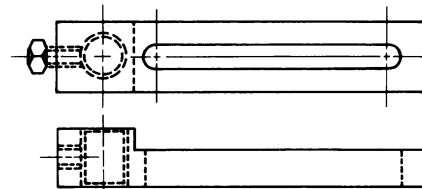


Linkage Connector
A-3795 - Straight
A-13053 - Swivel
5/16" dia. hole



90° Angle Bracket Damper Mount
13-1187

High Torque Actuators



Crank Arm
A-4120
33/64" slot. Radius
adjustable form 1" to 5"



Connecting Link
A-4122
1/2" diameter rods, adjustable from 15-3/4" to 24-3/4"

For Millimeters multiply inches by 25.4 (Inches x 25.4 = Millimeters).